

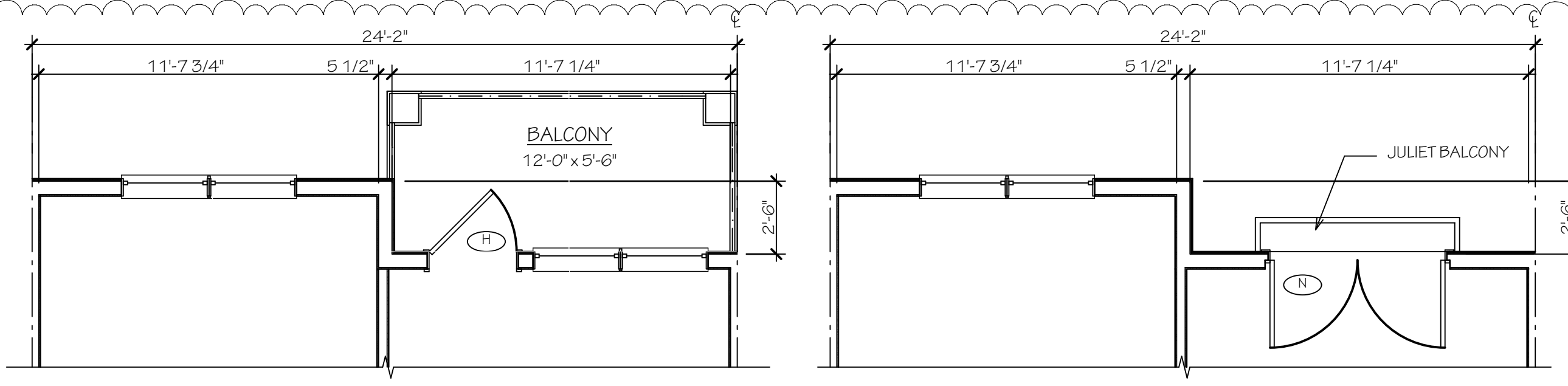
BATH / TOILET ACCESSORY SCHEDULE

SEE SPECIFICATION FOR MODEL NUMBERS

MARK	TYPICAL RESIDENTIAL ACCESSORY ITEMS	MOUNTING HEIGHT (BATHS W/ TUBS)	MOUNTING HEIGHT (BATHS W/ SHOWERS)
1.	(1) 24" GRAB BAR AT TUB (WHERE SHOWN)	36" AFF TO CL	36" AFF TO CL
2.	(1) SHOWER CURTAIN ROD	6'-6" AFF	6'-6" AFF
3.	1" SHAPED BAR	N/A	36" AFF TO CL
4.	(3) 24" & (1) 12" GRAB BARS AT TUB (WHERE SHOWN)	36" AFF TO CL	36" AFF TO CL
5.	(1) REMOVABLE HANDICAP SEAT @ ROLL-IN SHOWER	N/A	17"-19" SEAT HEIGHT
6.	(1) REMOVABLE HC SEAT @ TUB	AS SHOWN, 17"-19" AFF	N/A
7.	(1) HAND HELD SPRAYER W/ 60" HOSE (WHERE SHOWN)	4'-0" TO SPRAYER	4'-0" TO SPRAYER
8.	(1) EMERGENCY PULL	30" AFF	30" AFF
9.	(2) ROBE HOOKS ON DOOR	4'-0" & 5'-0" AFF	4'-0" & 5'-0" AFF
10.	(2) 24" TOWEL BAR	3'-0" AFF (U.N.O.)	3'-0" AFF (U.N.O.)
11.	(1) 36" GRAB BAR BEHIND TOILET	36" AFF TO CL	36" AFF TO CL
12.	(1) 42" GRAB BAR ALONG SIDE TOILET	36" AFF TO CL	36" AFF TO CL
13.	(1) TOILET PAPER DISPENSER	15"-19" AFF 9" HORIZ	15"-19" AFF 9" HORIZ
14.	(1) MIRROR (FULL WIDTH OF VANITY x 36" HIGH) - U.N.O.	3'-4" TO BOTTOM	3'-4" TO BOTTOM
15.	(1) MEDICINE CABINET (RECESSED)	3'-4" TO LOWEST SHELF	3'-4" TO LOWEST SHELF
16.	GRAB BAR REINFORCING	20"-30" AFF (HORIZONTAL BARS) 42" AFF (VERTICAL BARS)	N/A
17.	SHOWER HEAD	STANDARD MTG. HGT.	N/A
18.	CERAMIC TILE TUB SURROUND	PER ELEVATIONS	N/A
19.	CONTROL AREA (OFFSET)	PER ELEVATIONS	N/A
20.	(1) 18" VERTICAL GRAB BAR AT TUB (WHERE SHOWN)	42" A.F.F.	N/A
21.	(2) 48" TOWEL BAR	8'-0" A.F.F.	8'-0" A.F.F.
22.	(1) SOAP DISH @ BATHING AREA	6" ABOVE TUB RIM	24"-28" AFF
23.	LIGHT FIXTURE	2" ABOVE MIRROR	2" ABOVE MIRROR

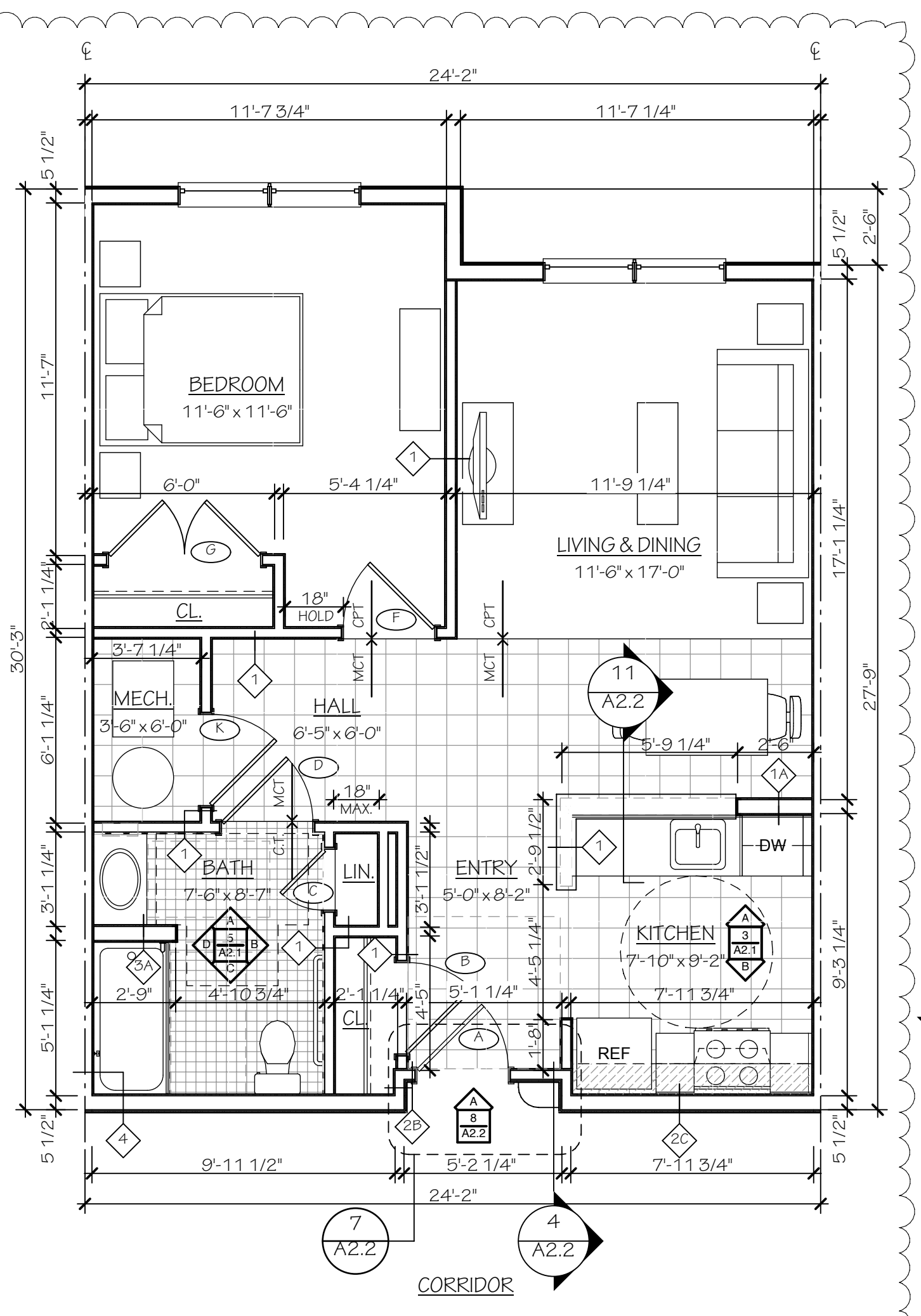
TYPICAL UNIT PLAN NOTES

- ALL PLAN DIMENSIONS TAKEN TO STUD OR FACE OF DIMENSION UNLESS NOTED OTHERWISE. I.E. DWELLING SEPARATION / PARTY WALL DIMS TAKEN FROM STUD TO CENTERLINE. ALL INTERIOR ELEVATIONS TAKEN TO FINISH FACE.
- ALL INTERIOR NON-LOAD BEARING WALLS ARE 2X4 STUD WALLS UNLESS NOTED OTHERWISE. ALL EXTERIOR LOAD BEARING WALLS ARE 2X6 UNLESS NOTED OTHERWISE.
- ALL WALLS ARE PARTITION TYPE 1 UNLESS NOTED OTHERWISE. OTHER PARTITIONS CALLED OUT ON PLAN ARE TYPICAL FOR THAT UNIT TYPE. PROVIDE FIVE (5) WIRE COATED SHELVES IN LINEN CLOSET, TYPICAL. SPACE SHELVES PER INTERIOR ELEVATIONS. PROVIDE BLOCKING AS SPECIFIED.
- PROVIDE CONTACT CLOSET TO RECEIVE ONE ROD AND ONE WIRE COATED SHELF PER INTERIOR ELEVATIONS. PROVIDE CENTER SUPPORT FOR ALL SHELVES AND RODS GREATER THAN 5'-FEET OR GREATER IN LENGTH.
- PROVIDE 4X4 THRESHOLDS AT ALL ENTRY DOORS AND INTERIOR DOORS UNLESS NOTED OTHERWISE. FLASH PATCH AS NECESSARY TO ACHIEVE MAXIMUM ALLOWABLE THRESHOLD.
- PROVIDE HORIZONTAL ALUMINUM MINI BLINDS AT ALL WINDOWS.
- REFER TO ELECTRICAL DRAWINGS FOR LOCATIONS OF ALL TV RECEPTACLES, PHONE JACKS, ELECTRICAL OUTLETS, LIGHT SWITCHES.
- MINIMUM SPACE PROTECTION ANNUAL SPACE BETWEEN ANY PENETRATING ITEM & FIRE RESISTANCE MATERIAL SHALL MAINTAIN THE INTEGRITY OF THE RESISTIVE ASSEMBLY.
- FIRE DAMPERS SHALL COMPLY WITH UL 555 & BEAR LABEL OF AN APPROVED AGENCY. THEY SHALL BE INSTALLED AT PENETRATIONS OF RATED WALLS, PARTITIONS AND FLOOR/CEILING ASSEMBLIES. CONTRACTOR TO COORDINATE LOCATIONS IN THE FIELD AND PROVIDE ACCESS SPACES WITHIN 24" FOR ALL CONCEALED AREAS REQUIRING ACCESS.
- ALL HOLLOW VERTICAL AND HORIZONTAL SPACES, CONCEALED SPACES AND OPENINGS SHALL BE FIRE-LOCKED AS REQUIRED BY SECTION 717 OF THE BUILDING CODE.
- FLOOR AND ROOF FRAMING TO STACK WITH STUDS BELOW. SEE E&B DETAILS.
- COORDINATE MECHANICAL DUCT OPENINGS WITH TRUSS LAYOUT DWG TO ENSURE ALIGNMENT.
- PROVIDE FULL HEIGHT CORNER GUARDS AT ALL OUTSIDE CORNERS IN ACCESSIBLE UNITS.
- PROVIDE HOLLOW GRILLE IN WALL AT UNIT MECHANICAL WALL. SEE MECHANICAL DRAWINGS FOR SIZES. COORDINATE LOCATION IN THE FIELD W/ THE ARCHITECT.
- PROVIDE VINYL BASE AT MECHANICAL CLOSETS AND KITCHEN CABINETS, ALL OTHER BASES TO BE WOOD. PROVIDE PAINTED WOOD SHOE MOLD AT FLOORS WITH VCT IN ADDITION TO WOOD SHOE.
- COORDINATE EXACT WINDOW LOCATIONS WITH OVERALL FLOOR PLANS. SEE FLOOR PLANS FOR WINDOW DESIGNATIONS.



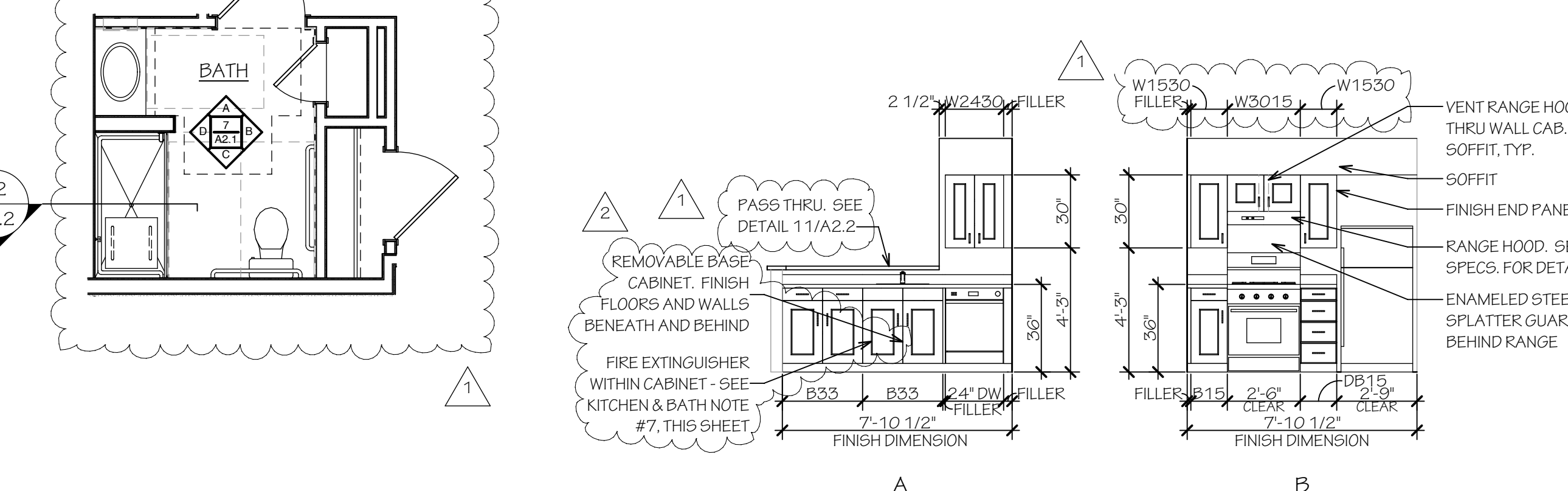
UNIT A - BALCONY OPTION AT FRONT
UNIT A - JULIET BALCONY OPTION (2ND & 3RD FLOOR AT BACK)

- NOTE: FOR RESILIENT CHANNEL LOCATIONS, SEE A1.1 THRU A1.6
- NOTE: FOR ROLL-IN SHOWER PLAN, SEE 11/A2.2
- NOTE: REFER TO OVERALL FRAMING PLANS FOR EXACT EXTERIOR WALL AND DEMISING WALL TYPES. CONDITIONS MAY VARY FROM UNIT TO UNIT.
- NOTE: PROVIDE RESILIENT CHANNELS ON EXTERIOR WALLS AT ALL UNITS FACING TREVOSE ROAD OR TURNPIKE THAT DO NOT HAVE BRICK VENEER.

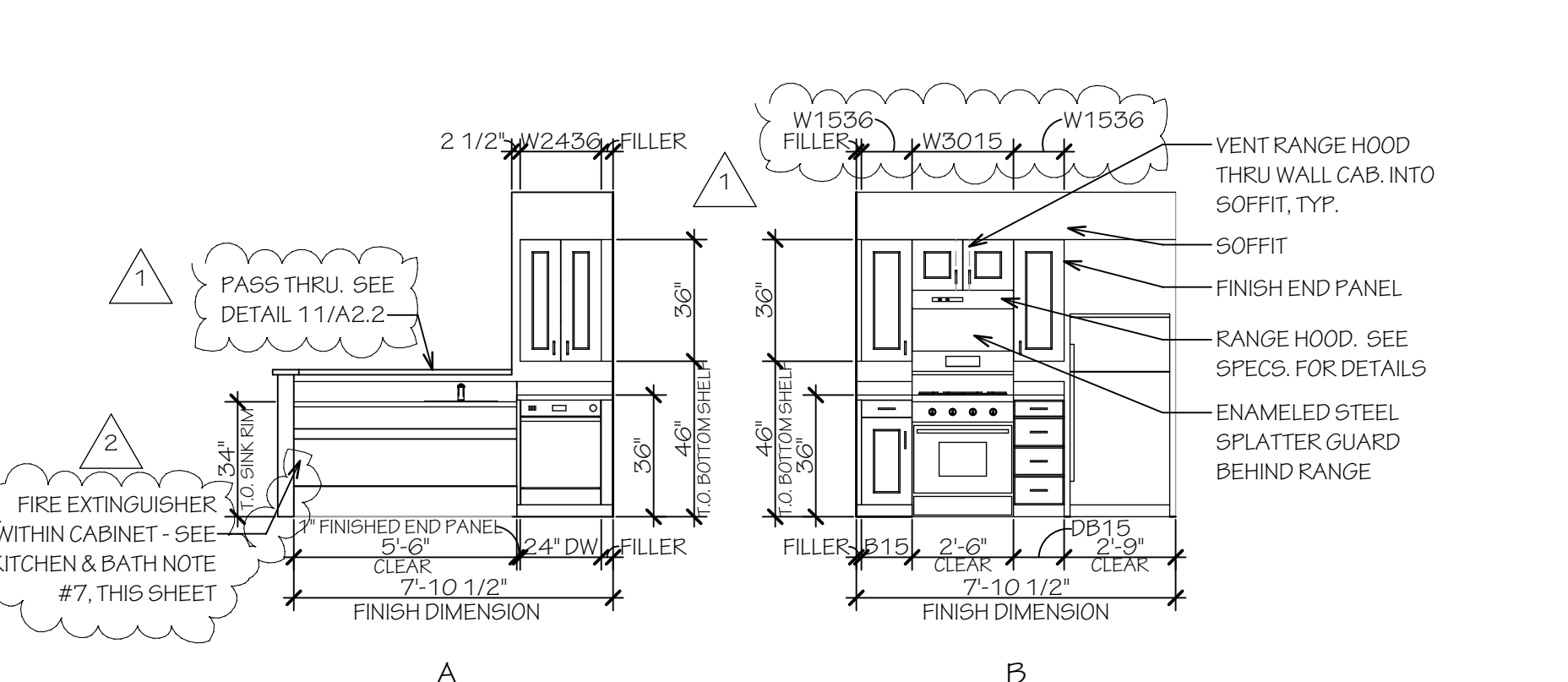


UNIT A - TYPICAL 1 BEDROOM UNIT
SCALE: 1/4" = 1'-0"

- NOTE: FURNITURE SHOWN IN BEDROOMS AND LIVING/DINING ROOM, N.I.C.



TYPICAL BATHROOM PLAN - ROLL-IN SHOWER (UNIT A SHOWN)
SCALE: 1/4" = 1'-0"



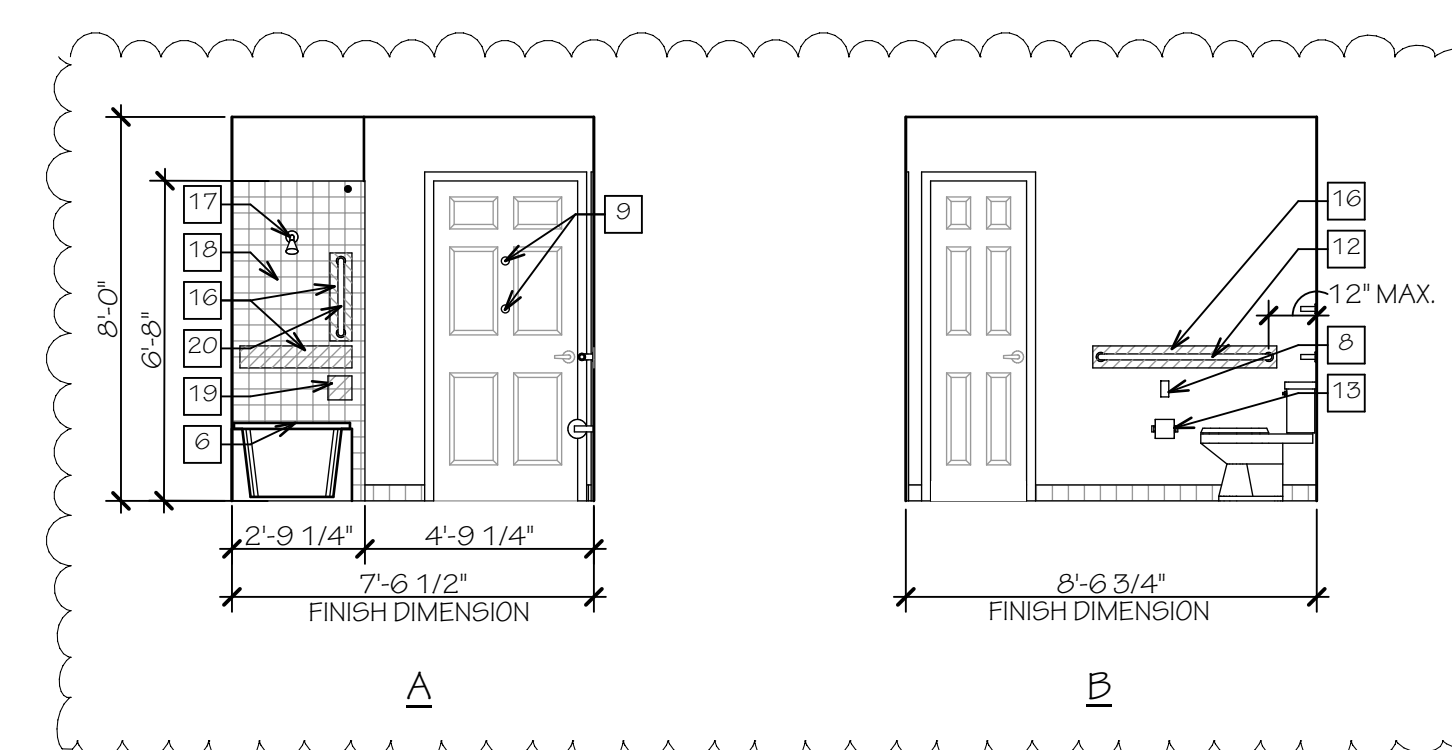
TYPICAL KITCHEN ELEVATIONS - ADAPTABLE
TYPICAL KITCHEN ELEVATIONS - ACCESSIBLE
SCALE: 1/4" = 1'-0"

KITCHEN & BATH NOTES

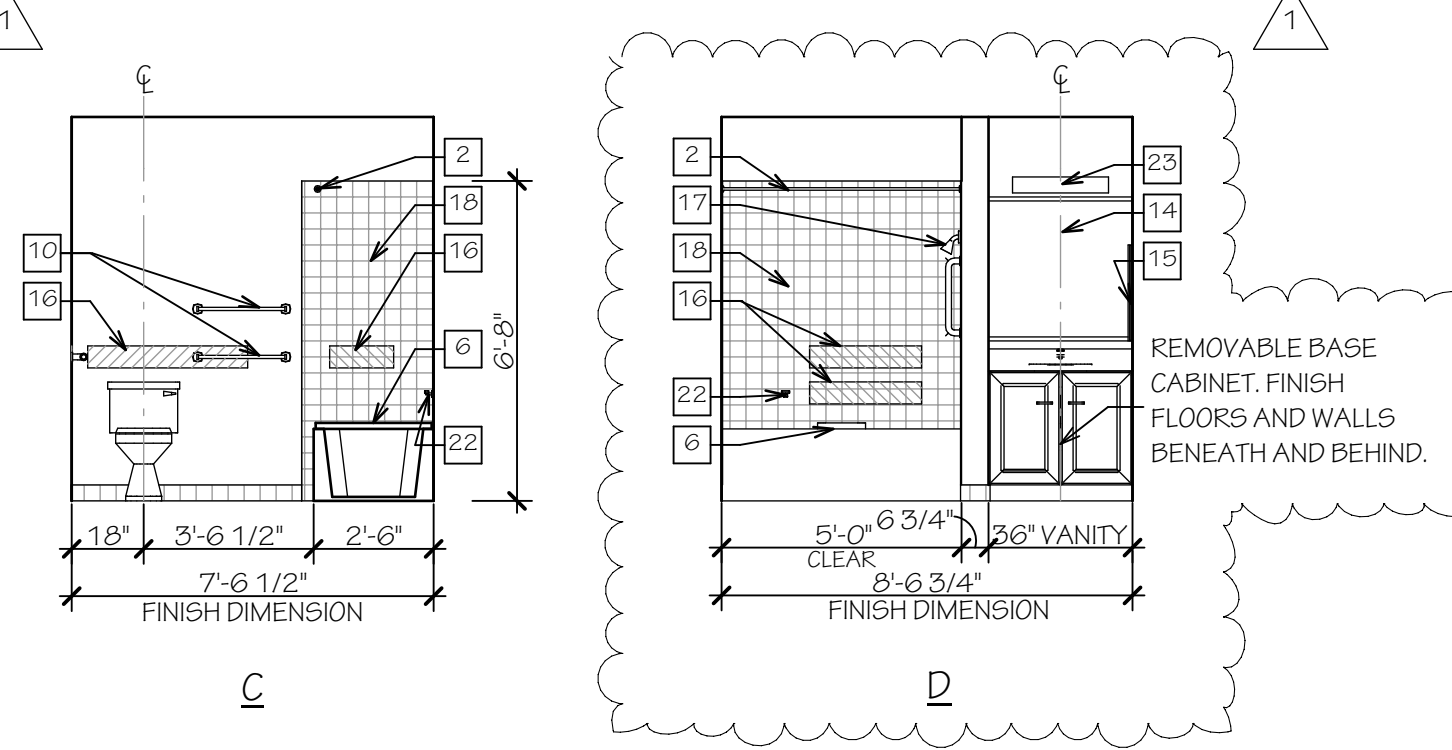
- EXTEND FLOOR FINISH UNDER ALL OPEN AREAS IN ALL KITCHENS AND BATHS. INSULATE ALL EXPOSED PIPES UNDER KITCHEN AND BATH RANGES WITH 1/2" INCH IRM-FLEX OR EQUAL.
- PROVIDE SOLID WOOD BLOCKING FOR ALL WALL MOUNTED GRAB BARS, ACCESSORIES, CABINETS, ETC. BLOCKING SHALL BE 2X LINTO STUDS. NO TOE NAILING. CERAMIC ACCESSORIES SHALL BE BRACKETED INTO BLOCKING. GLUING WILL NOT BE PERMITTED. GRAB BAR LOCATIONS ARE INDICATED BY HATCHED AREAS.
- SEAL ALL UNFINISHED HOOD SURFACES UNLESS OTHERWISE NOTED. I.E. UNDERSIDE OF COUNTER, ETC.
- ALL RESIDENTIAL UNITS TO RECEIVE THE FOLLOWING APPLIANCES: FRONT CONTROL ELECTRIC RANGE WITH BACKSPASH, RANGE HOOD AND DISHWASHER. ONE BEDROOM KITCHEN TO RECEIVE TOP MOUNT REFRIGERATOR. SEE SPECIFICATION AND NOTATIONS INTERIOR ELEVATIONS FOR MODEL NUMBERS. WIRE RANGE HOOD LIGHT TO WALL SWITCH & P&A CONTROL IN UNITS. SEE ELECTRICAL DRAWINGS.
- PROVIDE ENAMEL STEEL HEATSHIELD ABOVE ALL RANGES AT BACK WALL AND ALONG SIDE WALL WHEN RANGES AGAINST WALL FROM TOP OF RANGE TO UNDERSIDE OF HOOD. FINISH COLOR TO MATCH COLOR OF APPLIANCES.
- SECURELY FASTEN RANGE TO WALL BEHIND. PROVIDE ENOUGH SLACK TO ALLOW RANGE TO BE MOVED 6" TO 12" INCHES FROM THE WALL.
- PROVIDE ONE HOOK MOUNTED 2A-106C FIRE EXTINGUISHER IN EACH DWELLING UNIT UNDER KITCHEN SINK. LOCATION SHALL NOT INTERFERE WITH REQUIRED CLEARANCES PER ICC ANS1 A117-2003 AND IJCC 5-2.3.7. PROVIDE ONE STOVE/TOP FIRE-STOP™ CANISTER IN RANGE HOOD FOR ALL UNITS.
- AT ACCESSIBLE KITCHENS: COUNTERTOPS TO BE 34-INCHES AFF. W/100" CLEAR SPACE BENEATH AS NOTED. (TOP OF SINK RIM OR COUNTER TO BE INSTALLED AT 2'-10" W/ HOWEVER IS HIGHER) INSTALL 36-INCH HIGH WALL CABINETS WITH 46-INCH AFF. TO THE BOTTOM SHELF.
- FINISH ALL EXPOSED ENDS OF ALL KITCHEN AND BATH CABINETS, CABINET DOORS, SHELVES, ETC. SEAL ALL LOCATIONS SUSCEPTIBLE TO WATER. ALL CABINET DRAWERS AND DOORS TO HAVE 1/2" HIGH PLASTIC WIRE PULLS. INSTALL VINYL BASE AROUND ALL BASE CABINETS, INCLUDING SIDES. INSTALL WOOD BASE ALONG ALL WALLS AND OPEN SPACES.
- ALL KITCHEN SINKS TO HAVE DRAIN OFFSET TO RIGHT OR LEFT REAR CORNER. PROVIDE A MINIMUM KNEE CLEARANCE OF 27-INCHES PER ICC ANS1 A117-2003 AND IJCC 5-2.3.7. INSULATE ALL EXPOSED PIPES. SEE NOTE #1.
- PROVIDE BACKSPASH AT ENDS OF ALL COUNTERTOPS WHERE THEY MEET WALLS, BOTH REAR AND SIDE.
- PROVIDE 34-INCH HIGH COUNTER AND COUNTERTOP WITH INTEGRAL SINK IN ALL BATHROOMS. PROVIDE SIBER FLASHES AND APRONS TO MATCH COUNTERTOP. PROVIDE MINIMUM OF 30-INCH WIDE CLEAR LEG SPACE.
- PROVIDE 3/8" INCH CEMENT BOARD OR APPROVED EQUAL AT ALL 3 WALLS AROUND SHOWER TUB AREA.
- FOR ALL SHOWERS AND BATH TUBS UTILIZE A FULLY INTEGRAL TRAP (SEALED DRAIN, FULLY GULLED). THIS DOES NOT NEED AN ACCESS PANEL. PROVIDE FRONT ACCESS FAUCET CONTROL.
- ALL DWELLING UNIT WITH ROLL-IN SHOWERS SHALL BE PROVIDED WITH AN ADDITIONAL FLOOR DRAIN OUTSIDE THE VICINITY OF THE SHOWER. SEE PLUMBING DRAWINGS.
- PROVIDE PORTABLE BATH AND SHOWER SEAT FOR ALL UNITS WITH ROLL-IN SHOWERS. PROVIDE REMOVABLE BENCH FOR ALL UNITS WITH BATH TUBS. SEE SPECIFICATION SECTION 10B00.
- CONTRACTOR TO SUBMIT CAULK SAMPLES FOR ARCHITECT TO SELECT COLOR AT KITCHEN AND BATH COUNTERTOPS.

H&VI NOTES

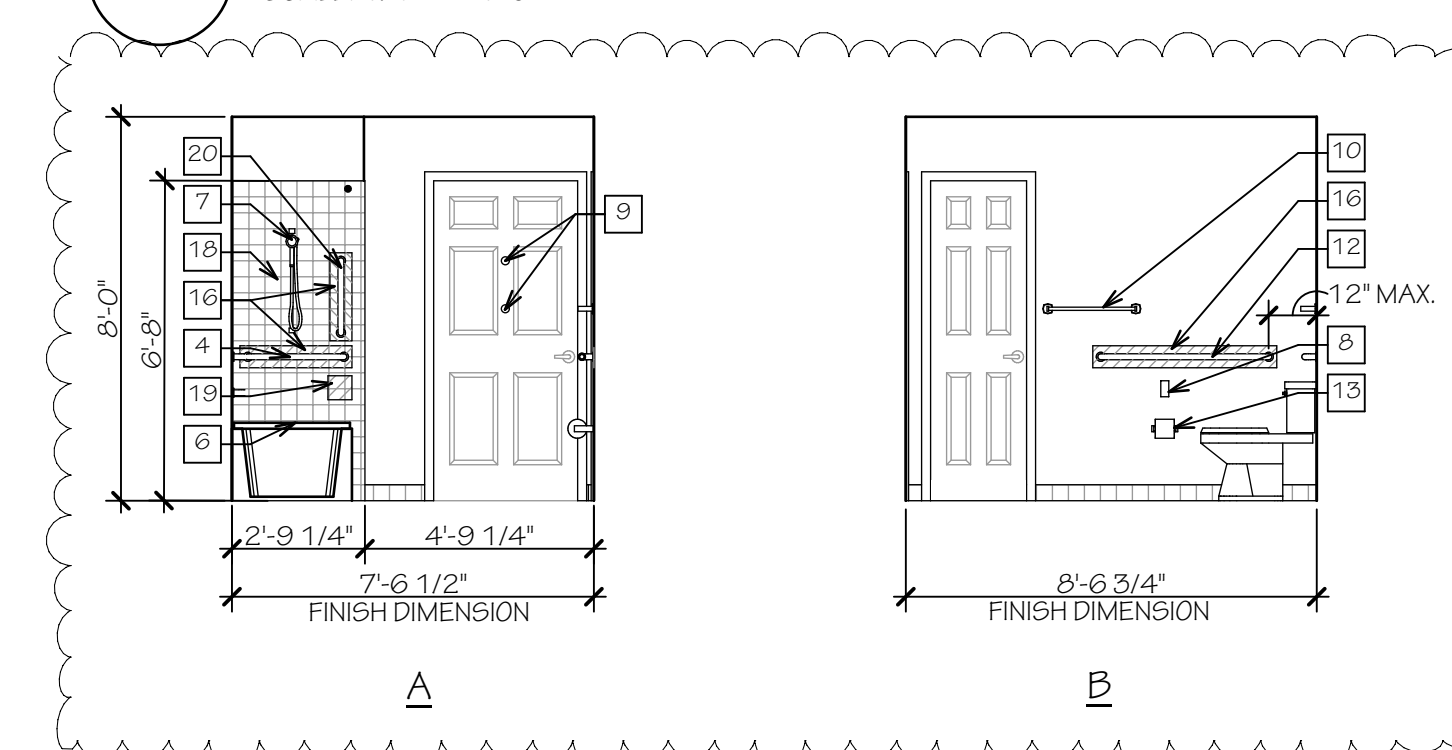
- REFER TO OVERALL FLOOR PLANS TO IDENTIFY WHICH UNITS ARE DESIGNATED AS HEARING AND VISUALLY IMPAIRED. PROVIDE THE FOLLOWING AT H&VI UNITS ONLY.
- PROVIDE (1) DUPLEX RECEPTACLE WIRE TO (1) OUTLET FOR DOORBELL SIGNALER # SA-09700 BY HARC. MERCHANTVILLE, LTD. (1-800-445-8968) SIGNALER TO BE INTERCONNECTED WITH DOORBELL BUZZER THROUGH A CONNECTION IN JUNCTION BOX PROVIDED BY HARC. JUNCTION BOX SHALL BE INSTALLED IN SPACE RESERVED FOR STANDARD DUPLEX RECEPTACLE. BOTTOM HALF OF JUNCTION BOX IS A 120V OUTLET TO WHICH THE SIGNALER IS PLUGGED INTO. SIGNALER AUTOMATICALLY SENDS A SIGNAL TO THE REMOTE RECEIVER IN THE BEDROOM(S) SPECIFIED.
- IN BEDROOMS PROVIDE SONIC ALERT RECEIVER. MODEL # SA-100. RECEIVER PLUGS INTO 120V RECEPTACLE AND RECEIVES THE PLUG FROM A 5C-VIB-FJ BEDSHAKER. RECEIVER TO ALSO RECEIVE SIGNAL FROM DOORBELL SIGNALER WHICH ACTIVATED THE BEDSHAKER.
- IN ALWAYS IMMEDIATELY ADJACENT TO BEDROOMS, PROVIDE CENTER #7109LS MULTIPLE STATION SMOKE DETECTOR/ALARM WITH VISUAL SIGNAL DETECTORS SHALL BE HARD WIRED AND INTERCONNECTED WITH EACH OTHER AND ALL OTHER NOTIFICATION DEVICES IN THE UNIT. ADJACENT TO HALL HARDWIRED DETECTOR INSTALL HARC #5C9-C02 CARBON MONOXIDE DETECTOR. HARD WIRED LOOSE EQUIPMENT SHALL BE TURNED OVER TO THE OWNER AT COMPLETION OF THE PROJECT.



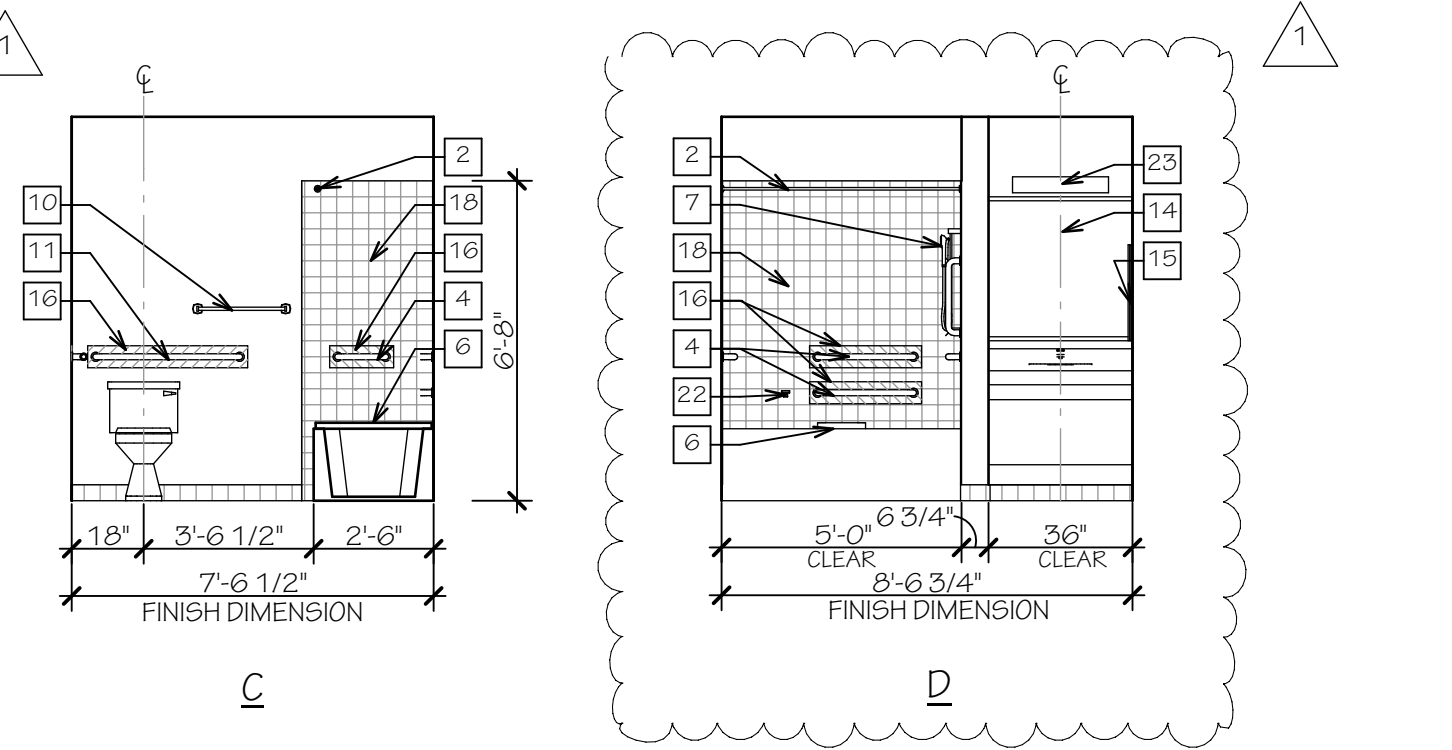
UNIT A - TYPICAL 1 BEDROOM BATHROOM ELEVATIONS - ADAPTABLE
SCALE: 1/4" = 1'-0"



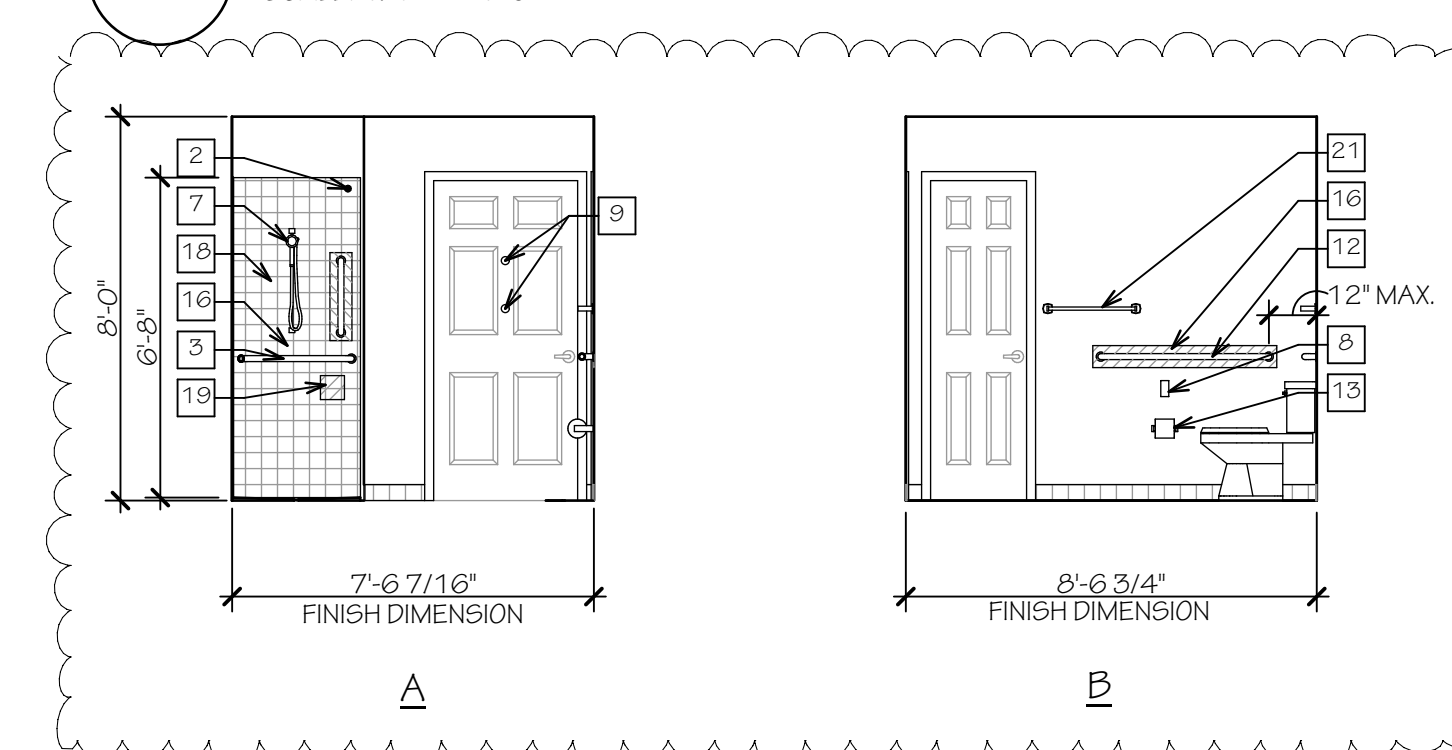
UNIT B - TYPICAL 2 BEDROOM BATHROOM ELEVATIONS - ADAPTABLE
SCALE: 1/4" = 1'-0"



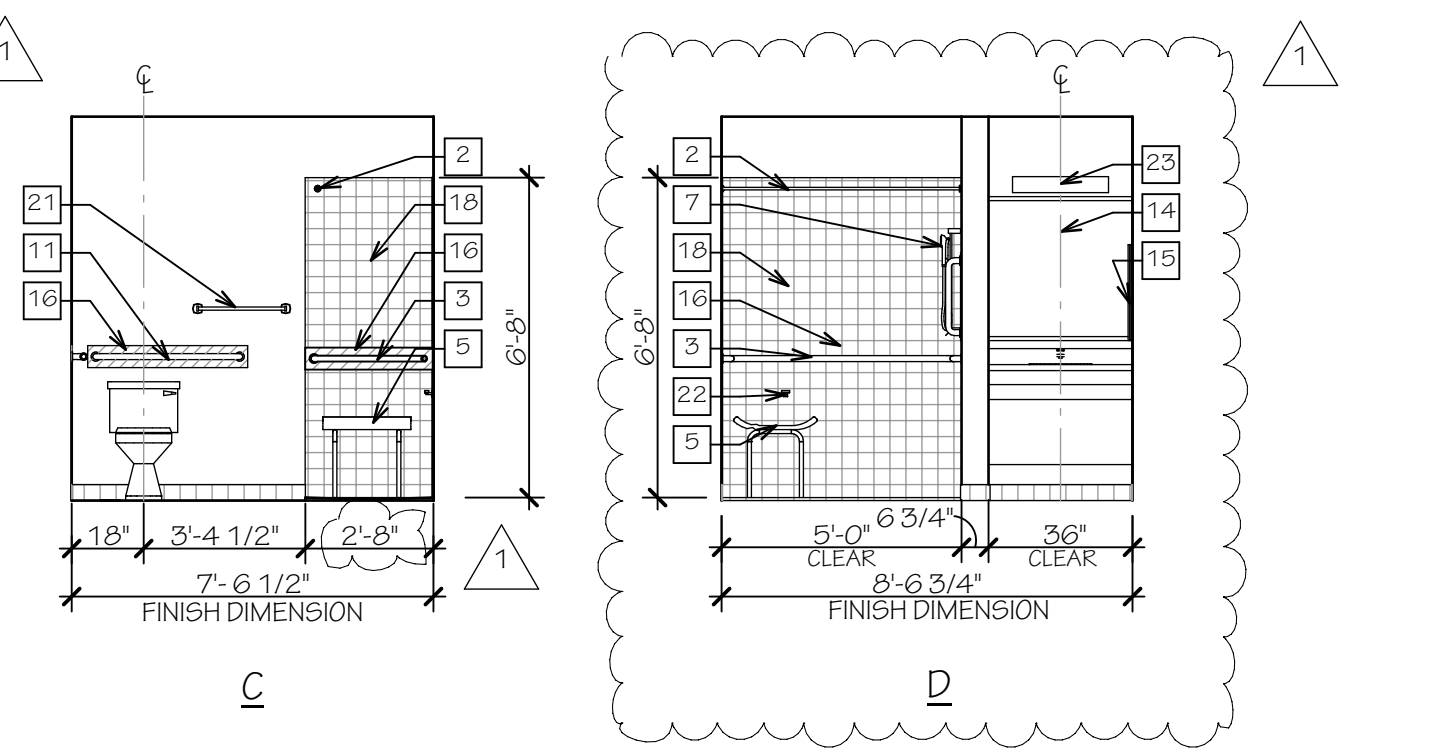
UNIT A - TYPICAL 1 BEDROOM BATHROOM ELEVATIONS - ACCESSIBLE
SCALE: 1/4" = 1'-0"



UNIT B - TYPICAL 2 BEDROOM BATHROOM ELEVATIONS - ACCESSIBLE
SCALE: 1/4" = 1'-0"



UNIT A - TYPICAL 1 BEDROOM BATHROOM ELEVATIONS - ROLL-IN SHOWER
SCALE: 1/4" = 1'-0"



UNIT B - TYPICAL 2 BEDROOM BATHROOM ELEVATIONS - ROLL-IN SHOWER
SCALE: 1/4" = 1'-0"